

Portishead Sculpture Trail

The Blue Route



Map
Enclosed

Start point: The Precinct, Portishead BS20 6AH

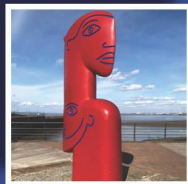
Distance: 1.3 miles / 2.09 km

Duration: 1 hour approximately

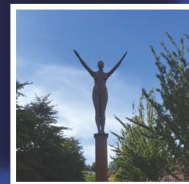
Type: Easy walk, wheelchair and buggy friendly



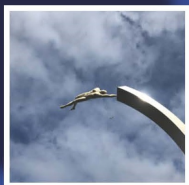
1
Timelines
Marianne Forrest



5
Ship to Shore
Jon Buck



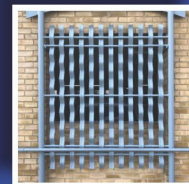
9
Echo
Rick Kirby



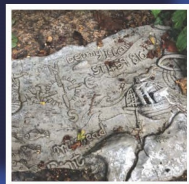
2
Flying
Lucy Glendinning



6
Energy Artwork
Mark Merer



10
Grilles to Car Park
Matthew Fedden



3
Riddle of the Stones
Teān Kirby



7
The Lady Sings
Michael Disley



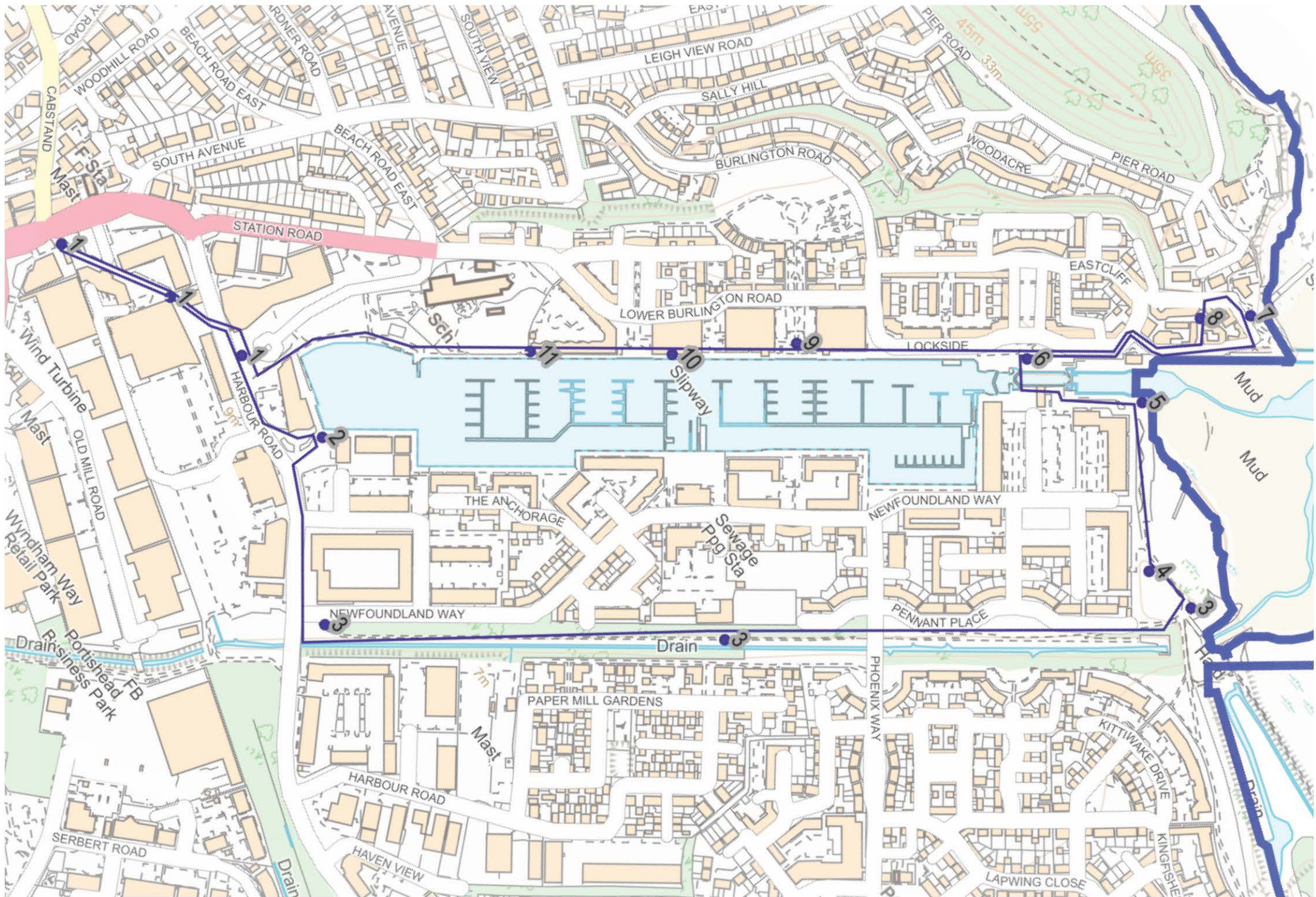
11
Topping Out
Michael Disley



4
Full Fathom
Michael Dan Archer



8
The Bristol and
Portishead Pier and
Railway Co 1867
Michael Disley



- As you follow the route on which these artworks stand you might like to consider your reaction to them.
- Do they enhance or clash with the space they are in?
- Do they represent the history and community of that space?
- If you discover more about the artists that created them, does that make a difference to how you feel about them?

To find out more information visit -
www.portishead.gov.uk/portishead-sculpture-trail

Or scan the QR code below.



This leaflet has been produced by Portishead Town Council.

For further information, please call **01275 847 078** or email enquiries@portishead.gov.uk

