

## Designating and Protecting Local Green Spaces

### Background

The Portishead draft Neighbourhood plan has the following Objective and Policy.

#### **Draft Policy PEN6 - Designation of Local Green Spaces**

##### ***Relevant Objective***

To protect and improve the leisure and recreation opportunities for residents of all ages by protecting and expanding community facilities and spaces for community activities and events to ensure that Portishead is a welcoming, safe and accessible place for everyone.

To ensure all residents have easy access to local green, blue and open spaces, and to promote environments and transport networks that offer all individuals and communities the greatest potential to lead active and healthy lifestyles.

##### ***Draft Policy***

Planning permission will not be granted except in very special circumstances for development which adversely affects a designated Local Green Space as shown on Figure 8 (below) and detailed in the Local Green Space Evidence Base Report, particularly regarding the characteristics underpinning its designation, such as beauty, historic importance, recreational value, tranquillity or richness of wildlife.

The green spaces shown on Figure 8 (below), and detailed in the Portishead Local Green Space Evidence Base Report, are designated as Local Green Spaces, in accordance with NPPF paragraphs 101-103, and will be protected from built development except in exceptional circumstances.

For further information please see pages 47 to 50 of the draft Neighbourhood Plan and the "Portishead Local Green Space Evidence Base Report" which can be found by going to the following link.

### [Portishead Local Green Space Evidence Base Report](#)

### What is a Local Green Space?

Through Local and Neighbourhood Development Plans, local communities can identify and protect green areas of particular importance to them by designating them as Local Green Spaces (LGS).

Once a site is designated as a Local Green Space, it is protected against inappropriate development except in 'very special circumstances' (National Planning Policy Framework 2021 para. 147).

**Once a space is designated Local Green Space, it has protection against development consistent with the protection of land in the Green Belt.**

What makes a space suitable for Local Green Space designation?

In order to be suitable for Local Green Space (LGS) designation, a space must be:

- In reasonably close proximity to the community it serves;
- local in character and not an extensive tract of land,
- demonstrably special to the community (by way of any or all of its beauty, tranquillity, recreational use, historic significance or wildlife value) (National Planning Policy Framework 2021, para. 101-103).

National Planning Practice Guidance also identifies certain types of spaces which are often not suitable for LGS designation due to their function, including:

- education sites (school fields, playgrounds etc),
- highway land / verges, and
- sites with extant planning permission.

There are already existing Local Green Space designations for Portishead in the adopted North Somerset Local Plan. These are listed on the map (Figure 8) below.

#### Current Local Green Space status

Many other open spaces in Portishead are already protected to some degree by way of their location within the Green Belt or status as a Site of Special Scientific Interest. When thinking about designating further Local Green Spaces, consideration has been given to whether any additional local benefit would be gained by designation as a Local Green Space;

Work by the Neighbourhood Plan (NDP) team has already discounted spaces for which LGS designation is not appropriate. The NDP team has written to all relevant landowners regarding land that may be appropriate for a Local Green Space designation. PTC is one of these landowners.

Other Open space designations are possible, for example, a space can be designated as a Community Open Space which offers a lower level of protection from development. A community Open Space can be disposed of, but any disposal must be advertised and objections considered before any disposal can take place. A community Open Space designation would be appropriate on a site such as a community sports ground where there will be a desire or need to improve community and sports facilities on the site as LGS designation would make these improvements much more difficult to achieve.

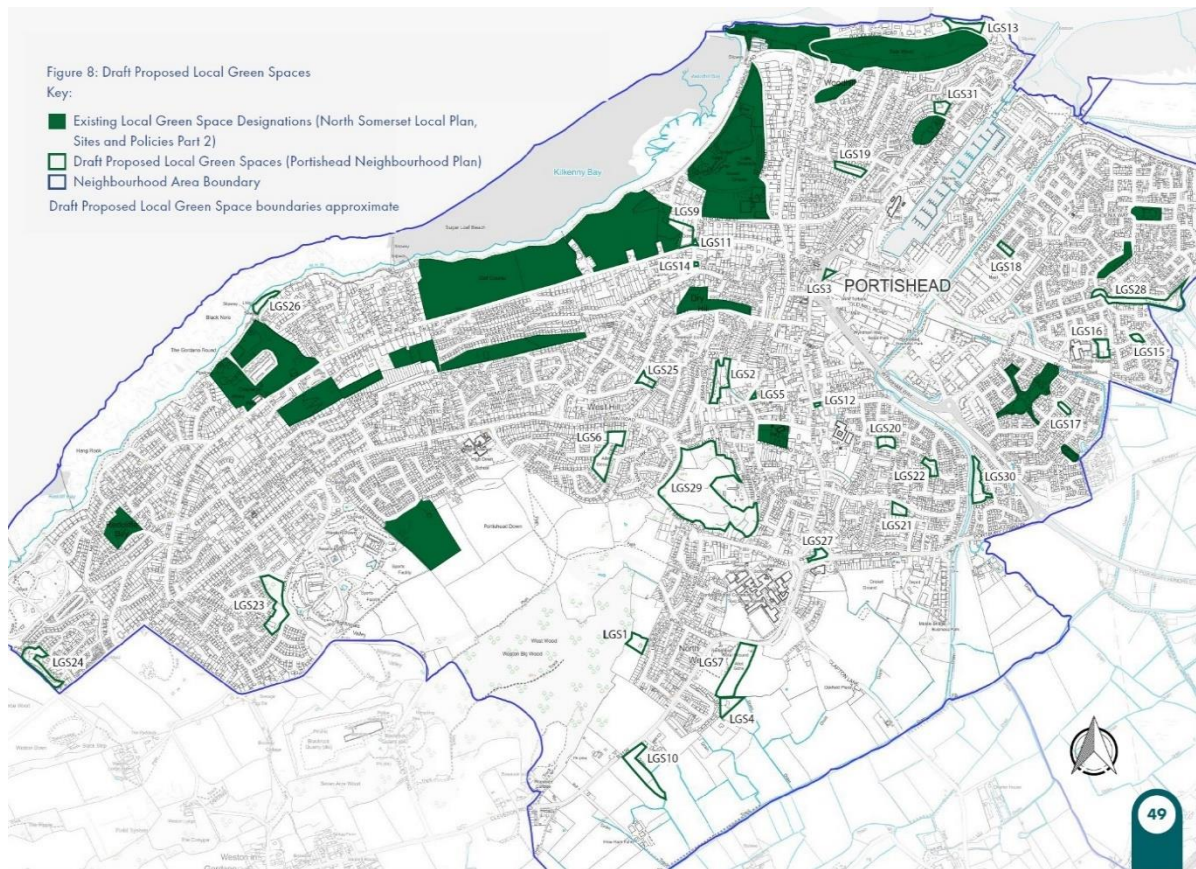
#### What is requested from PTC?

The following PTC owned sites are potential Local Green Space sites. See map below

- LGS1 Underwood Road Play Area/Field
- LGS2 Slade Road Play Area (Not the Slade Road Playing field which is owned by NSC)
- LGS4 Mead Road Play Area
- LGS7 Gertie Gales Allotments
- LGS9 Beach Hill Allotments
- LGS10 North Weston Allotments

**The Neighbourhood Plan team requests a decision from PTC on whether it approves of any or all of these sites being put forward for Local Green Space designation in the Neighbourhood Plan.**

**Figure 8 Draft Proposed Local Green Spaces**



Paul Gardner , Neighbourhood Development Plan Team

April 2023